

**REPORT ON MANEUVER
DIVISION, CAMP ROOT,
FORT RILEY, KANSAS,
SEPTEMBER - 1902 - OCTOBER**

Published @ 2017 Trieste Publishing Pty Ltd

ISBN 9780649328338

Report on Maneuver Division, Camp Root, Fort Riley, Kansas, September - 1902 - October by J. H. Dockweiler

Except for use in any review, the reproduction or utilisation of this work in whole or in part in any form by any electronic, mechanical or other means, now known or hereafter invented, including xerography, photocopying and recording, or in any information storage or retrieval system, is forbidden without the permission of the publisher, Trieste Publishing Pty Ltd, PO Box 1576 Collingwood, Victoria 3066 Australia.

All rights reserved.

Edited by Trieste Publishing Pty Ltd.
Cover @ 2017

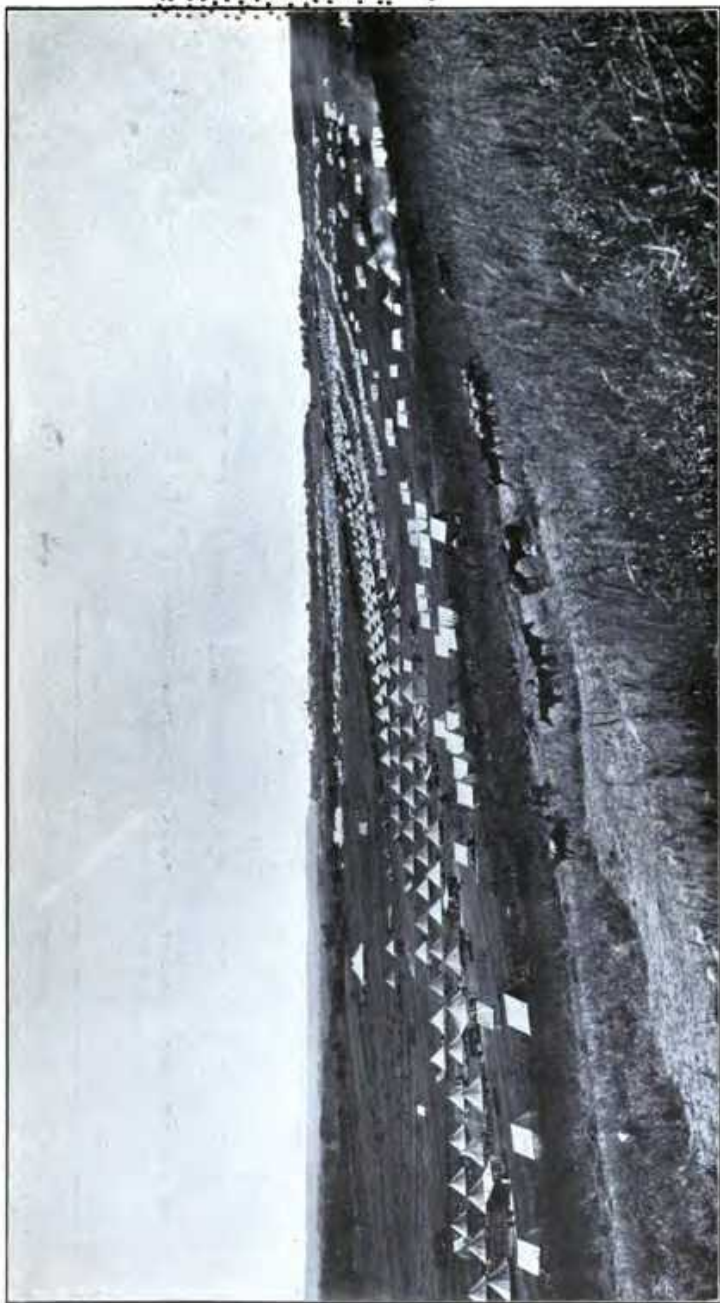
This book is sold subject to the condition that it shall not, by way of trade or otherwise, be lent, re-sold, hired out, or otherwise circulated without the publisher's prior consent in any form or binding or cover other than that in which it is published and without a similar condition including this condition being imposed on the subsequent purchaser.

www.triestepublishing.com

J. H. DOCKWEILER

**REPORT ON MANEUVER
DIVISION, CAMP ROOT,
FORT RILEY, KANSAS,
SEPTEMBER - 1902 - OCTOBER**

70 1910
August 1910



GENERAL VIEW OF CAMP ROOT.
Looking Southeast from Sheridan Bluffs, toward Post at Fort Riley, Kansas.

Calif. Adjutant Gen. 4/5

REPORT ON

MANEUVER DIVISION

CAMP ROOT, * * *
FORT RILEY, KANSAS

September - 1902 - October

.... BY

J. H. DOCKWEILER,
Major and Engineer Officer,
First Brigade, N. G. C.



SACRAMENTO:

W. W. SHANNON : : : : SUPERINTENDENT OF STATE PRINTING
1903

11253
C3

UNIV OF
CALIFORNIA

REPORT
ON
Maneuver Division, Camp Root, Fort Riley, Kansas.

By J. H. DOCKWEILER,
Major and Engineer Officer, First Brigade, N. G. C.

LOS ANGELES, CAL., January 5, 1903.

BRIGADIER GENERAL GEORGE STONE,
Adjutant General, State of California.

SIR: Pursuant to the following instructions:

SPECIAL ORDERS,
No. 8.

STATE OF CALIFORNIA, ADJUTANT GENERAL'S OFFICE,
SACRAMENTO, September 22, 1902.

(Extract.)

The Secretary of War having requested that an officer of the National Guard of California be sent to Fort Riley, Kansas, to witness and take part in the joint maneuvers of troops of the Regular Army and National Guard, commencing September 29, 1902, Major J. H. Dockweiler, Engineer Officer, First Brigade Staff, is hereby detailed for such service and will proceed at once to Fort Riley, and upon arrival there, will report to Major General John C. Bates, U. S. A. Upon the completion of this duty, Major Dockweiler will return to his home, and report in writing to the Adjutant General the result of his observations upon the military exercises which he is to witness.

The expense connected with this duty will be paid from the proper military fund.

By order of the Commander-in-Chief.

GEORGE STONE,
Adjutant General.

Official: (Signed:) N. S. BANGHAM,
Assistant Adjutant General.

I have the honor to submit the ensuing report.

I arrived at Headquarters Maneuver Division, Fort Riley, Kansas, on the morning of September 29, 1902, and immediately reported to Major General John C. Bates. I was assigned to a tent among those set apart for visiting National Guard officers. An information bureau attached to Headquarters, with a bulletin board in front of the tent designating it as such, in charge of three enlisted men, enabled me to secure such information as I required upon my arrival. This tent was placed next to the Chief Quartermaster's office, and was the first encountered in approaching Headquarters.

I was furnished with maps of Fort Riley Reservation, with circular No. 2, containing "Instructions for Framing Detachment Orders," and a "Schedule of Exercises for Maneuver Division."

242599

The troops participating in the maneuvers were assembled by the following order:

GENERAL ORDERS,
No. 96.

HEADQUARTERS OF THE ARMY, ADJUTANT GENERAL'S OFFICE,
WASHINGTON, August 20, 1902.

With the approval of the Acting Secretary of War, the following organizations will be assembled in camp at Fort Riley, Kansas, about September 20, 1902, to participate in the maneuvers to be held at that point during a period of ten days, beginning Monday, September 29th, and continuing until Wednesday, October 8, 1902:

First Battalion of Engineers;
Headquarters, band, first and second squadrons, Fourth Cavalry;
Third squadron, Eighth Cavalry;
Sixth, Seventh, Nineteenth, Twentieth, and Twenty-eighth Batteries Field Artillery;
Headquarters, band, and twelve companies Sixth United States Infantry;
Headquarters, band, and twelve companies Twenty-second United States Infantry;
Headquarters, band, and Eighteenth United States Infantry, excepting Company L;
Detachment Signal Corps;
Detachment Hospital Corps.

Posts which will be left without garrisons will each be cared for by a guard consisting of one commissioned officer and the smallest number of men consistent with the proper performance of the duty. It is desirable that organizations participating in the maneuvers shall have the maximum number of men available present for duty.

All organizations of the Regular Army participating in these maneuvers will be provided with the regulation allowance of wall tents for officers and conical wall tents for enlisted men at the rate of —

For cavalry, ten men per tent;
For field artillery, twelve men per tent;
For infantry, twelve men per tent.

The Governors of Arkansas, Kansas, and Nebraska, having signified their acceptance of the invitation of the Secretary of War to participate in these maneuvers, arrangements will be made for the following troops: Arkansas, one battalion of infantry; Kansas, two regiments of infantry, two batteries of field artillery; Nebraska, two regiments of infantry, twelve companies each.

The regular and militia forces will be organized as a division. Major General John C. Bates, U. S. Army, is assigned to command, and will proceed to Fort Riley, Kansas, not later than September 20, 1902, accompanied by his aids.

The following officers are assigned to duty, during the encampment, on the staff of Major General Bates, and will report to him by letter without delay and in person at Fort Riley, Kansas, not later than September 20, 1902:

Major J. W. McClermand, U. S. Cavalry, Assistant Adjutant General, adjutant general;
Lieutenant Colonel S. C. Mills, inspector general;
Captain C. B. Baker, Quartermaster, chief quartermaster;
Captain H. J. Gallagher, Commissary, chief commissary;
Lieutenant Colonel John Van R. Hoff, Deputy Surgeon General, chief surgeon;
Major G. P. Scriven, Signal Corps, chief signal officer.

After the completion of the maneuvers, Major General Bates and the other officers named will return to their proper stations.

The travel enjoined is necessary for the public service.

By command of Lieutenant General Miles.

WM. H. CARTER,
Brigadier General U. S. Army,
Acting Adjutant General.

Arkansas did not furnish its battalion of infantry, but a battalion of infantry was provided by Colorado, thus making an aggregate of about five thousand officers and men.

CAMP SITE.

The camp site, called Camp Root, was situated on Fort Riley Military Reservation, and was located on Pawnee Flats, on the west side of the Kansas River, and practically extended from the post hospital at Fort Riley to Sheridan Bluffs, a distance of one and one half miles. The plan of the camp was as follows:

Headquarters faced northeasterly and was located on the sloping flat on the right bank of One-Mile Creek and on the west side of the wagon road leading from the Post at Fort Riley northeasterly to Ogden.

Southeasterly from Headquarters and across the wagon road upon the flat were camped the First Battalion of Engineers, near One-Mile Creek; to the east of them the Signal Corps detachment; south of the Signal Corps was the general corral; and next to the Post were the Twenty-eighth Artillery and Kansas National Guard batteries.

Near the left bank of One-Mile Creek and west of the road were the field hospital and ambulance company, which latter was next to the wagon road. Going northerly along the street dividing the regiments, the Sixth Infantry was on the west and the Twenty-second on the east; then the Eighteenth Infantry on the west and the Colorado Battalion of National Guard on the east; then the Second Kansas, and then the First Kansas National Guard, both on the west; then the Fourth Cavalry squadron and Eighth Cavalry squadron, both on the west.

The camp site had a gentle slope, and permitted of excellent drainage.

FORT RILEY MILITARY RESERVATION.

Fort Riley, Kansas, Military Reservation comprises over twenty thousand acres of land, measuring eight miles east and west at its greatest length, and six miles north and south at its greatest width, having the form of a half circle with a diameter of eight miles. Drawing said diameter from Junction City, Kansas, northeasterly through the Post at Fort Riley (distant three miles from Junction City) to Ogden, Kansas, ninety per cent of the area would lie north of said line.

Roughly described, it is bounded on the south by the Republican and Smoky Hill rivers (which join and form the Kansas River one mile west of the Post) and the Kansas River.

The reservation can be divided into two parts, as to terrain: One, the rolling hills, from one hundred and fifty to two hundred feet above the rivers and forming a salient angle to the southeast, at the apex of which are located the buildings of the Post. These hills are cut up by numerous ravines, the bottoms of which are all thickly wooded as they approach the rivers. The hills are covered with a heavy growth of buffalo grass. A great number of flat limestone ledges are exposed on the tops and sides of the hills.

The other, the flats or lowlying lands, situated between the rivers and the hills.

One of these flats is three miles long, varying from one third of a mile to two miles wide, located north of Junction City, and being in the southwest corner of the reservation south of Ogden.

A range of hills about one hundred and fifty feet high, general north-east and southwest strike, lies about two miles east of the Post. The intervening space between the Kansas River and these hills is a flat about ten feet higher than the river, and is open country save for a clump of trees covering about one hundred and sixty acres, a mile northeast of the Post. To the south of the Post the flats are thickly covered with trees. The remaining flats are open country.

The margins of the rivers are very heavily wooded; I noted hickory, black walnut, red elm, and cottonwood trees.

Viewed from the rivers the hills present themselves in the shape of gentle bluffs about one hundred feet high.

At a point south of the Post, the Kansas River flows along the base of the hills, and taking this point as a center, the hills lie fan-shaped to the north, having an interior angle of about one hundred and twenty degrees.

An electric street railway runs from Junction City to the Post.

The Union Pacific Railway runs through the reservation, along the left bank of the Kansas River. A branch of said road, known as the Fort Kearney, leaves it at Junction City and runs along the right bank of the Republican River. A depot is located at the Post and sidings at the Pawnee Flats.

Good wagon roads lead from Junction City to the reservation. Three main roads cross the reservation in a general north and south direction. Side roads lead from them. Two wagon road bridges cross the Republican River.

The roads outside of the immediate vicinity of the Post are the ordinary dirt road, passable for all arms of the service, with no steep grades. In wet weather the roads on the hills are sticky and extremely slippery, forming the "gumbo" mud. In the flats, the soil being somewhat sandy, the rains improve the roads.

A map of the Fort Riley Military Reservation, showing the location of Camp Root, is hereto attached.

MANEUVERS.

The schedule of maneuver exercises was arranged by the following officers, detailed for that purpose in Special Orders No. 163, issued from Headquarters Department of the Missouri, August 29, 1902:

Colonel Camillo C. C. Carr, Fourth Cavalry;

Colonel George B. Rodney, Artillery Corps;

Colonel Arthur L. Wagner, Assistant Adjutant General, U. S. A.;

Major E. J. McClernand, Assistant Adjutant General, U. S. Cavalry;

Captain Horace M. Reeve, Seventeenth Infantry.

The following is a copy: