

**ILLINOIS TOURISTS  
GUIDE, 1932**

Published @ 2017 Trieste Publishing Pty Ltd

ISBN 9780649611058

Illinois Tourists Guide, 1932 by Illinois State Chamber of Commerce

Except for use in any review, the reproduction or utilisation of this work in whole or in part in any form by any electronic, mechanical or other means, now known or hereafter invented, including xerography, photocopying and recording, or in any information storage or retrieval system, is forbidden without the permission of the publisher, Trieste Publishing Pty Ltd, PO Box 1576 Collingwood, Victoria 3066 Australia.

All rights reserved.

Edited by Trieste Publishing Pty Ltd.  
Cover @ 2017

This book is sold subject to the condition that it shall not, by way of trade or otherwise, be lent, re-sold, hired out, or otherwise circulated without the publisher's prior consent in any form or binding or cover other than that in which it is published and without a similar condition including this condition being imposed on the subsequent purchaser.

[www.triestepublishing.com](http://www.triestepublishing.com)

**ILLINOIS STATE CHAMBER OF COMMERCE**

**ILLINOIS TOURISTS  
GUIDE, 1932**



ILLINOIS HISTORICAL SURVEY.

# ILLINOIS



## TOURISTS GUIDE 1932

Visit the Shrines of Lincoln in Springfield

## FOREWORD

Early in 1929 the Publicity Department of the Illinois Chamber of Commerce began to collect material and photographs of scenic and historical Illinois. In the summer of that year a pamphlet, "See Illinois First," was issued and had widespread distribution. Last year the State Chamber asked twenty-seven newspaper editors in Illinois—members of the Publicity Committee—to assist in really getting together a booklet giving descriptions of points of interest, photographs and exact locations in the State. In publishing this booklet the State of Illinois recognizes the signal work the State Chamber has done in giving Illinois and the nation the first edition of what will eventually become the guide book of thousands of tourists and vacationists. The Illinois Chamber of Commerce, in turn, thanks the editors, historians, State Departments, local chambers of commerce, and others who have collaborated in this work.

In pioneering this description of wonderful scenic and historical Illinois a few sections—of more than passing interest—may have been unintentionally omitted. For this we are sorry.

To the tourist—the vacationist—the history lover—Visit Illinois. It offers you recreation, education and delightful, healthful tours through one of the most beautiful sections in the world.

The Illinois Chamber of Commerce,  
Publicity Committee.

H. L. WILLIAMSON, *Chairman*  
J. T. MEEK, *Director.*

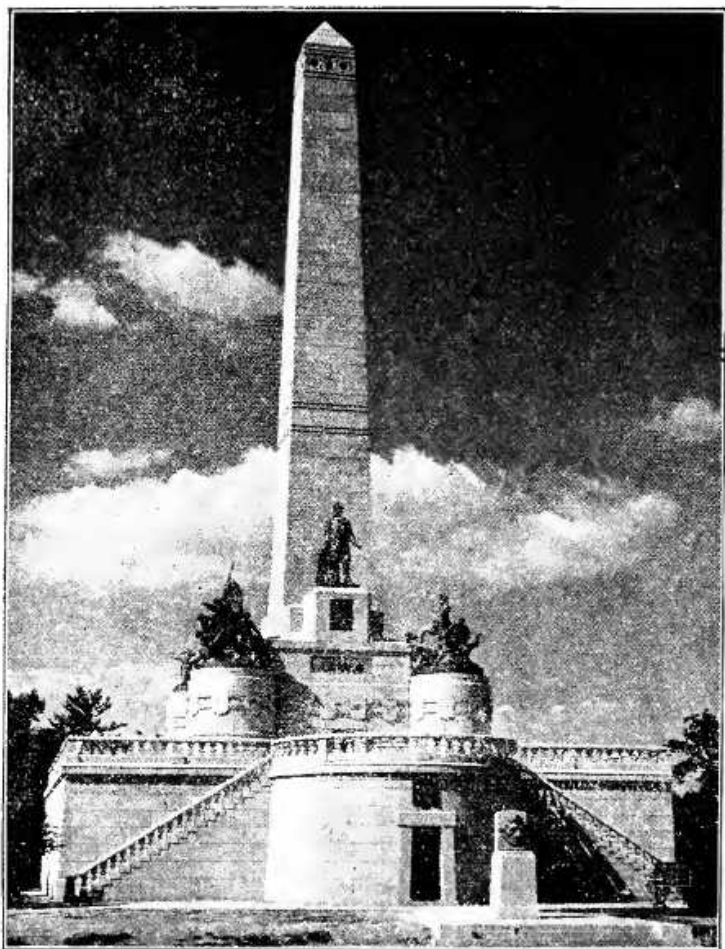
## ILLINOIS

**F**ROM Lake Michigan to Cairo and Metropolis, from the broad Mississippi River to the Wabash and the Ohio Rivers, Illinois is one great section of beauty—hills, cliffs, rivers, woodlands, lakes, prairies, and winding paved highways. No section in the world is more inviting from a scenic standpoint than Apple River Canyon, Savanna Headlands, the Rock River Area, Fountain Bluff, Giant City Park, the Illinois River, the Kankakee, and the marvelous Illinois Ozarks.

No section in the world is more interesting from a historical standpoint than Illinois—home of Abraham Lincoln, U. S. Grant, William Jennings Bryan, and a host of other illustrious personages. Illinois was the storm center of our early history and old Fort Massac, Fort Creve Coeur, Fort Chartres, Fort Armstrong, and the site of old Fort Dearborn bear witness to this.

Illinois was the happy hunting grounds for vast thousands of Indians who loved the "Illinois country" as their home. Chief Black Hawk, Shabbona and many others of the Sauks, Pottawatomies and other tribes defied the white men on these historic grounds. Illinois was a storm scene in Civil War days from Galena, where Grant left for War, to Cairo and the Halliday Hotel where he made his headquarters.

And throughout the State are paved roads—one of the greatest highway systems in the world—well marked and making easily accessible the garden spots of Nature—the historic scenes where much of the history of our nation was enacted. Illinois cities pride themselves on their hospitality, their splendid hotel facilities, their tourist camps and accommodations. The tourist in Illinois will be welcome—and he will find the Illinoisans anxious and ready to describe and explain the many wonders and stories of the past he will find here.



Lincoln Monument and Tomb, Springfield



## TABLE OF CONTENTS

Foreword .....	Page 2
Illinois .....	Page 3
Section 1—Alexander, Johnson, Pope, Hardin, Massac, Pulaski and Union Counties.....	Page 6
Section 2—Randolph, Franklin, Perry, Jackson and Williamson Counties .....	Page 18
Section 3—Edwards, Gallatin, Hamilton, Saline, Wabash, Wayne and White Counties.....	Page 31
Section 4—Bond, Jefferson, Clinton, Marion, Fayette and Washington Counties .....	Page 37
Section 5—Calhoun, Madison, Jersey, St. Clair and Monroe Counties .....	Page 44
Section 6—Coles, Cumberland, Jasper, Clay, Clark, Effingham, Crawford, Richland and Lawrence Counties .....	Page 52
Section 7—Morgan Greene, Sangamon, Macoupin and Montgomery Counties .....	Page 58
Section 8—Adams, Hancock, Brown, Pike and Scott Counties .....	Page 73
Section 9—DeWitt, Christian, Macon, Moultrie, Piatt and Shelby Counties .....	Page 83
Section 10—Champaign, Edgar, Douglas and Vermilion Counties .....	Page 87
Section 11—Cass, McDonough, Henderson, Schuyler and Warren Counties .....	Page 96
Section 12—Fulton and Mason Counties.....	Page 102
Section 13—McLean, Livingston, Ford and Woodford Counties .....	Page 106
Section 14—Kankakee, Iroquois and Will Counties.....	Page 113
Section 15—Henry and Rock Island Counties.....	Page 123
Section 16—Knox and Mercer Counties.....	Page 130
Section 17—Stark, Marshall, Putnam and Peoria Counties.....	Page 133
Section 18—LaSalle, Kendall and Grundy Counties.....	Page 138
Section 19—Carroll, Lee, Whiteside and Bureau Counties....	Page 146
Section 20—DeKalb and Kane Counties.....	Page 155
Section 21—Jo Daviess, Winnebago, Stephenson and Ogle Counties .....	Page 163
Section 22—Boone, Lake and McHenry Counties.....	Page 173
Section 23—Cook County and Chicago.....	Page 181
Section 24—DuPage County .....	Page 194
Section 25—Logan, Menard and Tazewell Counties.....	Page 195
Officers and Board of Directors of Illinois Chamber of Commerce .....	Pages 202-220
Officers of State of Illinois.....	Pages 221-232
Members of the Publicity Committee of the Illinois Chamber of Commerce .....	Pages 223-232
Interesting Facts About Illinois.....	Pages 233-238
Tourists' Camp Information .....	Pages 239-250
Illinois .....	Page 258
Index .....	Page 264

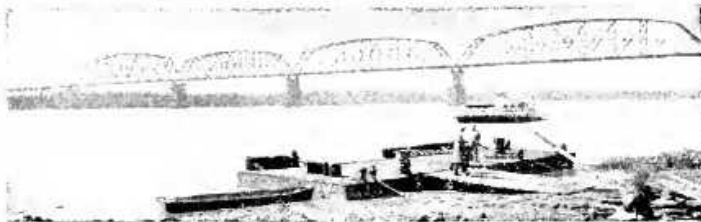
## SECTION 1

## Counties and County Seat Towns

Alexander County—Cair	Hardin County—Elizabethtown
Johnson County—Vienna	Massac County—Metropolis
Pope County—Golconda	Pulaski County—Mound City
	Union County—Jonesboro

(In extreme southern portion of Illinois)

History has been made in this southernmost tier of counties in Illinois. Equally interesting and fascinating is the scenery provided by the broad expanse of the Mississippi River and the Ohio River, the one coming down along the western border and the other winding picturesquely along the eastern side, the two meeting in a mighty expanse of waters at Cairo and going on to the Gulf from there. Between these two borders is a part of that fascinating country known as the Illinois Ozarks with their giant bluffs, dense foliage, crags and boulders. Within these seven counties is Fort Massac and the beginning of the trail blazed by George Rogers Clark and his immortal Kentucky "Long Knives"; Beautiful Fern Cliff, Cache River with its desolate cypress swamps, thousands of acres of peach and apple orchards—the heart of the Illinois peach and apple country. And, in the southernmost part, the entire crop of Illinois cotton is raised. You are in the Southland when in Southern Illinois for its borders drop below, far below, the Mason and Dixon line, and you are in a country where Southern hospitality is prevalent.



Ferry Boat on the Ohio River, Metropolis, Ill.

Four great Illinois highways go through these southern counties—Route No. 1, down through Tunnel Hill, the peach orchards and on to Metropolis and Fort Massac, Route No. 2, through beautiful scenery, on to Cairo and highways No. 150 and No. 147 converging also at Cairo.

### CAIRO

Cairo is rich in historical lore, was once an important station when the Mississippi and Ohio carried river traffic to its door, and is destined to again take a prominent part in our new waterway system. Here one may cross the Father of Waters on the new vehicle bridge constructed at a cost of \$3,100,000. The Ohio is also crossed by modern ferry boats. Crossing the river between Cairo and Wickliffe, Kentucky, by ferry, one will see the confluence of the two mighty streams and will see at one time the states of Illinois, Missouri and Kentucky. The vast panorama is a sight well worth seeing.

### GENERAL GRANT'S HEADQUARTERS

General Grant's headquarters from September,



Entrance to Fort Massac State Park, Metropolis