

**THE TRAIN DISPATCHER:
A MANUAL OF RAILWAY
TELEGRAPHY, PP. 1-102**

Published @ 2017 Trieste Publishing Pty Ltd

ISBN 9780649434008

The Train Dispatcher: A Manual of Railway Telegraphy, pp. 1-102 by A. W. Early

Except for use in any review, the reproduction or utilisation of this work in whole or in part in any form by any electronic, mechanical or other means, now known or hereafter invented, including xerography, photocopying and recording, or in any information storage or retrieval system, is forbidden without the permission of the publisher, Trieste Publishing Pty Ltd, PO Box 1576 Collingwood, Victoria 3066 Australia.

All rights reserved.

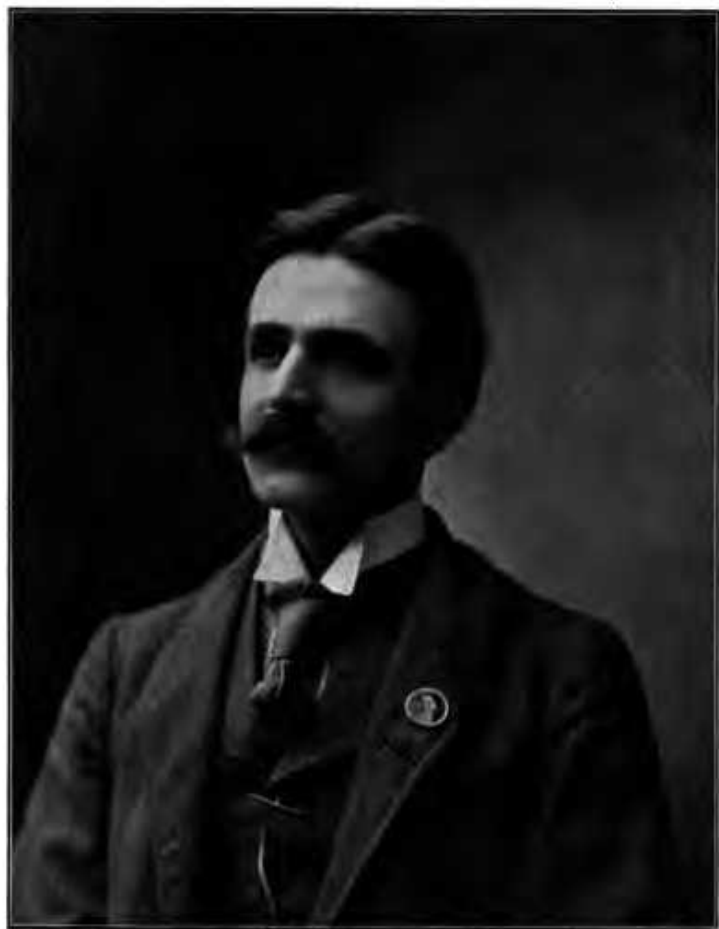
Edited by Trieste Publishing Pty Ltd.
Cover @ 2017

This book is sold subject to the condition that it shall not, by way of trade or otherwise, be lent, re-sold, hired out, or otherwise circulated without the publisher's prior consent in any form or binding or cover other than that in which it is published and without a similar condition including this condition being imposed on the subsequent purchaser.

www.triestepublishing.com

A. W. EARLY

**THE TRAIN DISPATCHER:
A MANUAL OF RAILWAY
TELEGRAPHY, PP. 1-102**



Yours Truly,
A. W. Early

THE TRAIN DISPATCHER

A MANUAL OF
RAILWAY TELEGRAPHY

BY
A. W. EARLY

DISPATCHER ON I., I. & I. DIVISION OF
L. S. & M. S. RY.

CHICAGO
THE HENNEBERRY COMPANY
PUBLISHERS

Transportation
Library

.TF
563
.E13

COPYRIGHT 1903

BY

A. W. EARLY

Leaves
Darius
5-6-52

CONTENTS

	PAGE
Introduction	9
Learning Telegraphy Correctly.....	11
Leaving the Office Without Permission.....	14
The Dispatcher's Office Work.....	15
Train Sheet.....	16
Starting Extras.....	17
Learning the Division.....	21
Learning Capacity of Conductor and Engineer and Engine.....	24
Combinations	26
Learning the Operators.....	29
How Orders are Put Out.....	30
Putting Signals on Trains.....	35
The Calling of Crews when Under the Dispatcher's Supervision	39
When a Wreck Occurs.....	42
When a Broken Rail Reported.....	43
When a Broken Switch Reported.....	44
When a Car Reported on a Passing Track.....	44
When Bridges are Reported Unsafe or Defective..	44
Where a Bridge has Burned or Been Washed Out.	45
Where an Interlock, Semaphore or Deraill is De- fective or Broken.....	45
When Water is Running Short at One Water Station	45
When an Engine has to Run for Water.....	46
When Engines Run Out of Water at a Crossing with Some Other Road.....	46
When You are Notified by Conductor that They are Running Short of Coal.....	46

	PAGE
Tonnage	47
Where Time is Made by Putting a Superior Class Train on Siding for Other Trains.....	47
Overtime	51
When an Engine Failure on a Passenger Train the Most Serious of All, and Must be Handled with the Least Delay.....	54
The Handling of Fast Traffic over Divisions.....	55
When there is a Car Running Hot.....	57
The Consist or Destination Report of a Train....	57
Where Stock is Being Loaded for a Train.....	58
Many Times Traffic is Badly Delayed by the Wires Going Open.....	59
When Asked as to the Movement of a Foreign Car Over Division by an Agent.....	61
When Stock or Fruit has Arrived Too Late to Catch the Fast Freights.....	62
Allowing Passengers to Ride on Freights.....	62
Where a Train Receives a Helper.....	63
Rushing Light Trains Over Division.....	64
The Handling of Trains on a Special Schedule...	65
Annulling of Trains.....	69
When You Have a Train Running So Many Hours or Minutes Late on an Order.....	70
When You Have an Order to a Train for It to Wait for a Certain Train.....	70
Too Much Carefulness Cannot be Used in Putting Out Orders.....	71
When an Operator is Repeating an Order.....	71
Sending Help to a Train.....	72
Annulling Orders.....	72
When a Train is Signing a Number of Orders....	73
Combining Orders.....	74

CONTENTS

7

	PAGE
Sawing Trains By.....	74
Meeting Trains at Blind Sidings.....	74
Operator's Failure.....	75
When Necessary to Keep an Operator on Hand	
After Working Hours.....	76
Advices Given Out by Dispatchers.....	76
Trainman's Failure.....	77
Exceptional Delays.....	77
Time	78
Fires	79
Rain	79
Detouring Passengers.....	79
Freezing Weather.....	80
Telegraph Passes.....	80
Extra Stops of Fast Passenger Trains.....	81
Assisting Commercial Lines.....	81
Intoxicated Operator.....	82
Avoiding Unnecessary Stops.....	82
Turning Trains Back.....	83
Running Ahead of Other Trains.....	84
New Time Card.....	84
The Standard Clocks.....	85
A Train Broke in Two.....	86
Irregular Signals.....	86
The Helper Engine.....	86
No Headlight Burning.....	87
Dangerous Weather.....	88
Valuable Figures.....	88
Registering Trains for Branch Runs.....	88
Placing Signals.....	89
Hold Order.....	90
Form of Orders in Detail.....	91
The Transfer.....	101
Final	104

